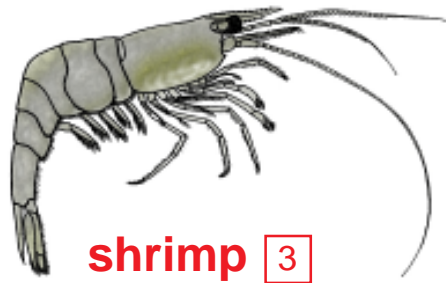


# Which critter did you catch?

## Swims fast



shrimp [3]



back swimmer [1]



diving beetle [2]

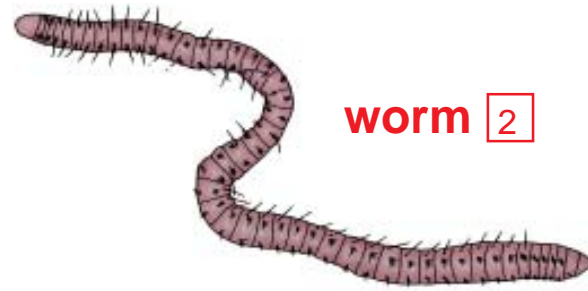


scud [3]



water boatman [2]

## Wriggles



worm [2]

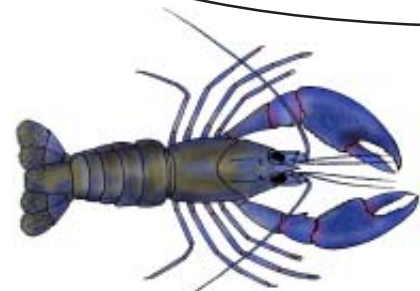


mosquito pupa [1]



mosquito [1]

## Legs, tails or feelers



yabby [4]



damselfly larvae [3]



caddisfly larvae [8]



mayfly larvae [9]



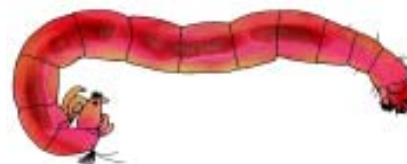
biting midge larvae [4]



stonefly larvae [10]



dragonfly larvae [3]



non-biting midge larvae [3]

## Slides



flatworm [2]



leech [1]



freshwater snail [1]

## Tiny



seed shrimp [NR]



copepod [NR]



water flea [NR]



water mites [7]

Very tolerant [1] - [3]

Tolerant [4] - [5]

Sensitive [6] - [7]

Very sensitive [8] - [10]

Not rated [NR]